



Moore House, 2 Gatliff Road
London SW1W

GARTONJONES.COM



Moore House, 2 Gatliff Road London, SW1W

£725 Per Week

GARTON JONES.COM

8 Gatliff Road
Grosvenor
Waterside
Chelsea
London
SW1W 8DP

Lettings:
+44 (0) 20 7730 5007
gws@gartonjones.com
www.gartonjones.com

A one bedroom apartment to rent of approx. 575 sq.ft (53.4sq.m) in Moore House, located close to the banks of the River Thames. This FURNISHED apartment further benefits from an OPEN PLAN reception room, a kitchen with integrated appliances, wood flooring, comfort cooling, modern bathroom, excellent storage including a utility cupboard housing a washer dryer and built in wardrobes to the master bedroom. 24 HOUR CONCIERGE, GYM and SPA. On-site Sainsbury's Local, coffee shop and private kids club. SLOANE SQUARE and VICTORIA station with Gatwick Express are within walking distance.

- 575sq.ft (53.4sq.m)
- 1 Double Bedroom
- Modern Bathroom
- Open Plan Reception Room
- Integrated Kitchen
- 24 Hour Concierge
- Secure Underground Parking
- Residents Leisure Suite with Gym & Spa Facilities
- On-Site Sainsbury's, Coffee Shop & Bakery, Purple Dragon Private Kids Club & Crèche
- Walking Distance to Sloane Square and Victoria Station



Available via Garton Jones on-site office at Grosvenor Waterside (underneath Bramah House).

Please note furniture may differ to that shown in the current photos.

12 month minimum term. 5 week deposit required.

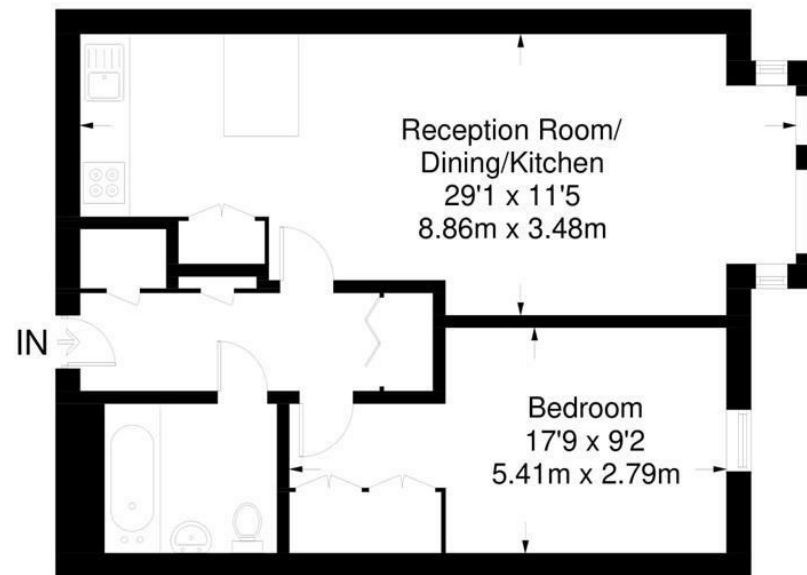
Council Tax: Westminster Council (band E).

EPC Rating: B (82)



Moore House

Approximate Gross Internal Area = 575 sq ft / 53.4 sq m



Fourth Floor

Not to scale, for guidance only and must not be relied upon as a statement of fact.
All measurements and areas are approximate only and have been prepared in
accordance with the current edition of the RICS Code of Measuring Practice.

